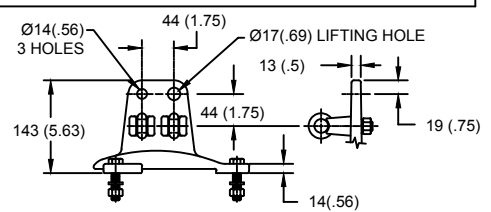
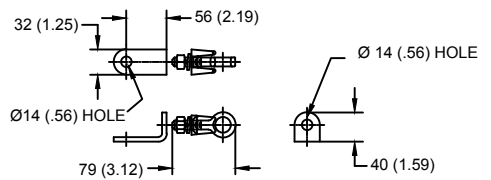


LINE TERMINAL DETAIL



HDG 4-HOLE TERMINAL PAD, PART No. 901704001
 TWO HDG TERMINALS, PART No. 2714143001
 SUITABLE FOR COPPER OR ALUMINUM CONDUCTOR SIZE
 Ø 7 (.25) - Ø 21 (.81)
 25 - 240 sq mm
 AWG#4 - 500 MCM

GROUND TERMINAL DETAIL



HDG TERMINAL BRACKET, PART No. 896064001
 ONE HDG TERMINAL, PART No. 2714143001
 SUITABLE FOR COPPER OR ALUMINUM CONDUCTOR SIZE
 Ø 7 (.25) - Ø 21 (.81)
 25 - 240 sq mm
 AWG#4 - 500 MCM

Ø = DIAMETER
 HDG = HOT DIP GALVANIZED

CHARACTERISTICS	
RATED VOLTAGE	132 kVrms
MCOV	106 kVrms
MASS	134kg (294lb)
CREEPAGE DISTANCE	3874 (152.5)
LIGHTNING IMP W/S	607 kV
SWITCHING IMP W/S	523 kV
POWER FREQ W/S	352 kVrms
TOV 1s	158 kVrms
TOV 10s	151 kVrms
COG ABOVE BASE	679 (26.7)
HOUSING	GREY PORCELAIN

CANTILEVER FORCE	
MAXIMUM CONTINUOUS	4686 N (1053lbf)
ULTIMATE (UMS)	11715 N (2634lbf)

RECOMMENDED CLEARANCE (TO METAL PARTS)	
PHASE TO GROUND	592 (23.3)
PHASE TO PHASE	682 (26.9)

- NOTES:
 1. DIMENSIONS IN millimeters(inches) SUBJECT TO ±3% TOLERANCE
 2. CLEARANCE AND INSULATION W/S VOLTAGE APPLY AT SEA LEVEL
 3. ARRESTER SUITABLE FOR OPERATION AT ALTITUDES UP TO 3650m (12000ft)

DISCHARGE VOLTAGE (kV) FOR INDICATED IMPULSE TYPES AND CURRENT MAGNITUDES							
FRONT OF WAVE	SWITCHING SURGE	8/20 LIGHTNING IMPULSE					
		1.5 kA	3 kA	5 kA	10 kA	20 kA	40 kA
10 kA	1 kA	273	284	294	308	329	362
334	261						

IEEE C62.11
 STATION CLASS
 SURGE ARRESTER
 Program Revision
 2021.04.27.02.51.45
 REV DATE **09/20/13**

CONFIDENTIAL: THIS DRAWING AND ITS CONTENTS ARE CONFIDENTIAL AND THE EXCLUSIVE PROPERTY OF HUBBELL POWER SYSTEMS. NO PUBLICATION, DISTRIBUTION OR COPIES MAY BE MADE WITHOUT THE WRITTEN CONSENT OF HUBBELL POWER SYSTEMS. HUBBELL POWER SYSTEMS UNPUBLISHED ALL RIGHTS RESERVED UNDER THE COPYRIGHT LAWS.

TITLE				MVN ARRESTER 106 KV MCOV			
SIZE	DWG NO.	CAT / PART / ASSY NO.		REV			
S	211372059	MVN132GA106AA		1			
DO NOT SCALE THIS DRAWING		DRN BY	NON	DATE	04/14/11	SHEET 1 OF 1	

